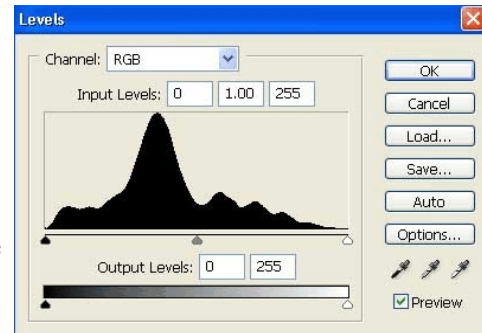


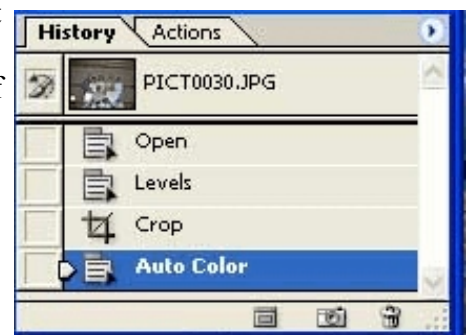
Photo Touch-ups

This article covers photo touch-ups using Photoshop CS. Every program should have the same kinds of options available, it is just finding out how to use the program you have and getting proficient at that program. Everything covered here can be found in the Photoshop Elements 4.0 and done very nicely. This program is \$70.00 at Costco stores and can also be found online sometimes cheaper. Just use your favorite browser and type in "photoshop elements 4.0" use the quotes, and then browse the sites for the best value. If the program is used, make sure you get the license numbers.

First of all the thing to watch for is the light to dark of a picture. You want the diamond at the bottom of the graph to be on each end. The left one is to make it darker, the right one is to make it lighter and the middle is to find the happy medium. So with this example I would slide the right diamond to the end where the graph starts to be black, and also slide the middle one to the high point in the middle. Now if as you are doing the moves you think that the picture is not correct, just cancel and you have not changed anything. The little droppers under the Options button are left to right. Black, Shadows, and White. You can click on each one of them and then click on your picture and it will change the light to dark. So click on the White one then click on your picture where it is the whitest. Do the same thing with the black and the shadows. The bottom slider bar effects the light to dark also. You have to play with each picture and get it the way you want it to look. You can also change the Channel at the top and correct the diamonds for each channel. Go ahead and play you can't hurt your picture if it is, already saved!



Use the History panel to go back if you make a mistake. At any time when you are making changes to your photo you can just click back one or two or three steps. For example if you did not like any of the last three steps (auto color, crop, or levels) you could click on the open and it would take you back to when you opened your photo.



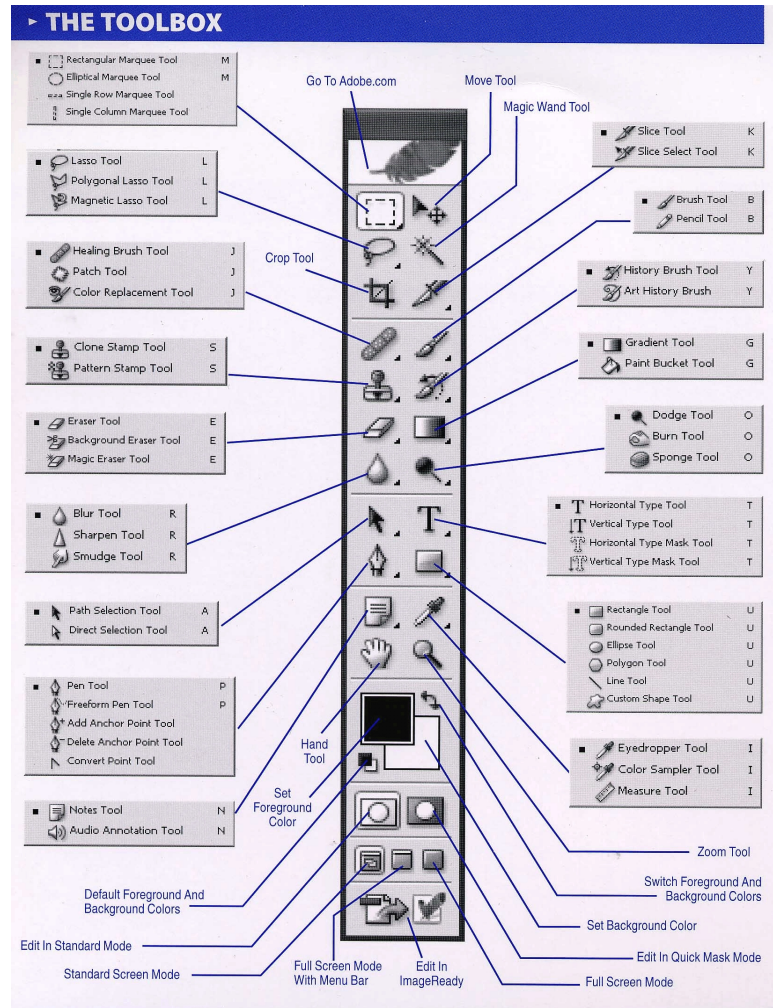
Using the Image, then Adjustments, there are a great number of things you can do with your photos. Here is the list of what can be done: Levels (by hand), Auto Levels, Auto Contrast, Auto Color, Color Balance (if your photo is off color), Brightness/Contrast, Hue/Saturation (this one can turn your photo to the old sepia color, if you check the colorize box), Desaturate (turns photo to black & white), Match color, Replace Color, Selective Color, Channel Mixer, Gradient Mixer, Photo Filter, Shadow Highlight, Invert, Equalize, Threshold, Posterize and Variations. Remember if you don't like what each of these do, then use the history to step back a step or use the cancel button.

Now on to the Tool Bar. Here is a diagram of what each tool does. Some of my favorite tools are:

Clone stamp which you can use to touch up your photo if it has tears or specks. You hold down the Alt key and left click of your mouse to sample where you want to copy from then, left click and drag to paste that chosen color and cover up the bad spot. With this tool you can also copy and paint two of the same CIDCA dog into the same picture and they would look like twins. Go ahead and try it, it is fun!

Crop tool, used to crop your picture and balance it out.

Magnetic Lasso, this follows the outline and follows the color along the way. You can use this tool, then use the levels and adjust the light to dark just in one spot of your photo. If the lasso gets carried away, click on one of the boxes and then hit the delete key and it erases the last few lines and boxes.



Eraser Tool, Can erase bad spot and replaces it with white. Used when doing layers.

Typing tool, click this tool one time then click on your picture where you want to type, when done, you have to click on any other tool to accept the typing and to move on.

Move Tool, use this tool when you want to copy a portion of a picture and move it to another picture. This is used in connection with the magnetic lasso tool.

Measure Tool, use this tool to draw a line on the bottom or top of a photo, then use the Image, Rotate, Arbitrary to straighten the picture.

Photoshop has a very long learning curve and it takes time to learn and time to play to learn. It is fun once you know all the tricks, so go ahead and give it a try, just make sure you have saved your photo and then play.

If you have questions or need help, please feel free to contact me at cathieowens@hughes.net